

Coronary Arteries Segmentation based on the 3D Discrete Wavelet Transform and 3D Neutrosophic Transform

Shuo-Tsung Chen, Tzung-Dau Wang, Wen-Jeng Lee, Tsai-Wei Huang, Pei-Kai Hung, Cheng-Yu Wei,
Chung-Ming Chen*, Woon-Man Kung*

ABSTRACT

Purpose: Most applications in the field of medical image processing require precise estimation. To improve the accuracy of segmentation, this study aimed to propose a novel segmentation method for coronary arteries using computed tomography angiography (CTA) data sets to allow for the automatic and accurate detection of coronary pathologies.

S.-T. Chen is with the Institute of Biomedical Engineering, National Taiwan University, Taipei 10617, Taiwan (ROC), and with the Department of Applied Mathematics, Tunghai University, Taichung 40704, Taiwan (ROC); (e-mail: shough33@thu.edu.tw).

T.-D. Wang is with the Cardiovascular Center and Division of Cardiology, Department of Internal Medicine, National Taiwan University Hospital, Taipei 10048, Taiwan (ROC); (e-mail: tdwang@ntu.edu.tw).

W.-J. Lee is with the Department of Medical Imaging, National Taiwan University Hospital, Taipei 10048, Taiwan (ROC); (e-mail: wenjeng@gmail.com).

T.-W. Huang is with the Department of Nursing, College of Medicine and Nursing, Hungkuang University, Taichung 43302, Taiwan (ROC); (e-mail: m8706001hk@hk.edu.tw).

P.-K. Hung is with the Institute of Biomedical Engineering, National Taiwan University, Taipei 10617, Taiwan (ROC); (e-mail: d96548023@ntu.edu.tw).

C.-Y. Wei is with the Department of Exercise and Health Promotion, College of Education, Chinese Culture University, Taipei 11114, Taiwan (ROC) and with the Department of Neurology, Chang Bing Show Chwan Memorial Hospital, Changhua 50544, Taiwan (ROC); (e-mail: yuyu@seed.net.tw).

C.-M. Chen is with the Institute of Biomedical Engineering, National Taiwan University, Taipei 10617, Taiwan (ROC); (*Corresponding author, e-mail: chung@ntu.edu.tw).

W.-M. Kung is with the Department of Exercise and Health Promotion, College of Education, Chinese Culture University, Taipei 11114, Taiwan (ROC) and with the Department of Neurosurgery, Lo-Hsu Foundation, Lotung Poh-Ai Hospital, Luodong, Yilan 26546, Taiwan (ROC); (*Corresponding author, e-mail: nskungwm@yahoo.com.tw).

Methods: The proposed segmentation method included 2 parts. First, 3D region growing was applied to give the initial segmentation of coronary arteries. Next, the location of vessel information, HHH sub-band coefficients of the 3D discrete wavelet transformation (DWT), was detected by the proposed vessel-texture discrimination algorithm. Based on the initial segmentation, 3D DWT integrated with the 3D neutrosophic transformation could accurately detect the coronary arteries.

Results: In order to evaluate the proposed method, the CTA scans of 20 patients were segmented for coronary arteries. The slice thickness was 0.625 mm, and the size of the volume was $512 \times 512 \times (\cdot)$. Each sub-branch of the segmented coronary arteries was segmented correctly. To evaluate the performance of our method in segmenting coronary arteries, we compared our results with those ground truth values obtained from the commercial software from GE Healthcare and the level-set method proposed by Yang *et al.* [11]. We used the overlapping metric (OM) and Hausdorff distance (d_H) to analyze the efficiency of each method and the results showed that the proposed method was much better.

Conclusion: This work proposed a novel segmentation method for coronary arteries in CTA data sets. Based on the initial segmentation of coronary arteries obtained from 3D region growing, one-level 3D DWT and 3D neutrosophic transformation can be applied to detect coronary arteries accurately. In our experiment, we tested 20 data sets with delineated ground truth centerline trees. Results indicate that the proposed method is effective and useful. It allows the coronary pathologies to be detected automatically and accurately.

Index Terms—coronary arteries, 3D region growing, 3D discrete wavelet transformation, 3D neutrosophic transformation

I. INTRODUCTION

Efficient and automatic image segmentation methods are useful for the isolation and visualization of vessels in computed tomographic angiography (CTA). There are many proposed methods for the segmentation of vessels [1-14]. A vessel filter [1] can be used to enhance tubular structures, however, it cannot address the problem of the image force and veins, which can lead to a narrowed or broken segmentation of vessels. Parametric shape models [2-5] do not directly allow for the detection of topological changes, and they usually obtain a seriously narrowed segmentation in the neighborhood of a branch point in the vessel. Level-set approaches [6-13] are computationally expensive. They also suffer from leakage at places where the intensity gradients of the edges are relatively weak, and are very sensitive to the placement of the initial contour of the propagating front. Metz *et al.* [14] used the minimum cost path of the specified start and end points in vessel to detect the coronary arteries centerline. This is not an automatic method, detecting branches is difficult. Friman [15] proposed multiple hypothesis template tracking, which follows the direction of centerline obtained in advance. However, it is difficult to detect small branches and vessels by using this method.

In this study, we propose a new method for automatically and correctly segmenting coronary arteries from CTA data sets. In image preprocessing, we detected the aorta automatically by using methods proposed in literature [5, 16]. The proposed coronary arteries segmentation

method is summarized as follows. First of all, we automatically obtained the seed point of a 3D region growing by the difference between the two adjacent slices due to the small changes of the aorta between two adjacent slices. Next, 3D region growing was applied to initially search for the probable location of coronary arteries, which was then dilated by 3 voxels. Based on the dilation of the probable location, we detected the coronary arteries accurately by applying the 3D discrete wavelet transformation (DWT) and 3D neutrosophic transformation to the CTA volume. The location of vessel information, in HHH sub-band coefficients, was detected by the proposed vessel-texture discrimination algorithm. Accordingly, HHH sub-band coefficients were used, which were characterized and classified by α -means operation and K-means clustering. Finally, the proposed method was tested on several CTA data sets, and the experimental results indicated that the proposed method had a good performance.

The rest of this study is organized as follows. Section II reviews some preliminaries, and section III uses 3D region growing and 3D DWT to propose a new method for segmenting coronary arteries. Section IV contains the experiments and discussion, and the conclusions are drawn in section V.

II. PRELIMINARIES

In this section, we will briefly introduce the concepts of DWT and provide an overview of

some fundamental mathematical concepts that are used in this study.

A. Region Growing

Region growing is a simple, well-developed, region-based image segmentation technique [17]. It postulates that neighboring voxels within the same region have similar intensity values, and is also classified as a voxel-based image segmentation method since it involves the selection of initial seed points. In other words, this method of segmentation examines neighboring voxels of initial seed points and determines whether neighboring voxels should be added to the region. Consequentially, the general concept of region growing is to group voxels with the same or similar intensities to one region according to the given seed points and a homogeneity criterion.

B. Discrete Wavelet Transform

Wavelet transform is obtained by a single prototype function $\psi(x)$ which is regulated with scaling and shift parameters. To construct $\psi(x)$, a scaling function $\phi(x)$ is determined.

The discrete normalized scaling and wavelet basis functions are defined as

$$\phi_{i,n}(t) = 2^{-i/2} \phi(2^{-i}t - n) \quad (1)$$

$$\psi_{i,n}(t) = 2^{-i/2} \psi(2^{-i}t - n) \quad (2)$$

where i and n are the dilation and translation parameters. Orthogonal wavelet basis functions not only provide a simple method to calculate coefficient expansion, but also span $L^2(\square)$ in signal processing. As a result, signal $S(t) \in L^2(\square)$ can be expressed as a series expansion of orthogonal scaling functions and wavelets. More specifically,

$$S(t) = \sum_{\ell} c_{j_0}(\ell) \varphi_{j_0,k}(t) + \sum_k \sum_{j=j_0}^{\infty} d_j(k) \psi_{j,k}(t) \quad (3)$$

where $c_j(\ell) = \int_{\square} S(t) \varphi_{j,\ell}(t) dt$ and $d_j(k) = \int_{\square} S(t) \psi_{j,k}(t) dt$ are the low-pass and high-pass coefficients, respectively; j_0 is an integer to define an interval on which $S(t)$ is a piecewise constant. The two-scale equations for scaling and wavelet basis function are given as follows.

$$\varphi(t) = \sqrt{2} \sum_{m \in \square} h_m \varphi(2t - m) \quad (4)$$

$$\psi(t) = \sqrt{2} \sum_{m \in \square} g_m \varphi(2t - m) \quad (5)$$

where $g_m = (-1)^m h_{1-m}$. The coefficient h_m in equation (4) has to meet several conditions for the set of the wavelet basis function to be unique, orthonormal, and have a certain degree of regularity.

The coefficients h_m and g_m play a very crucial role in a given DWT. Performing the wavelet transformation does not require the explicit forms of $\varphi(t)$ and $\psi(t)$ but only depends on h_m and g_m . The final output of the wavelet decomposition includes a set of j -level wavelet coefficients. One method to implement DWT is to use a filter bank that provides perfect reconstruction. DWT involves local analysis of frequency in space and time domains, and it provides multi-scale image details step by step. If the scale becomes smaller, every part becomes more accurate, and ultimately all imaging details can be focalized accurately. If DWT is applied to a volume, it will produce highest-frequency, middle-frequency, and lowest-frequency parts. Figure 1 shows the results of applying 3D

DWT to a volume, which includes eight parts: LLL, LLH, LHL, LHH, HLL, HLH, HHL, and HHH. The lowest-frequency and highest-frequency parts are LLL and HHH respectively [16, 17].

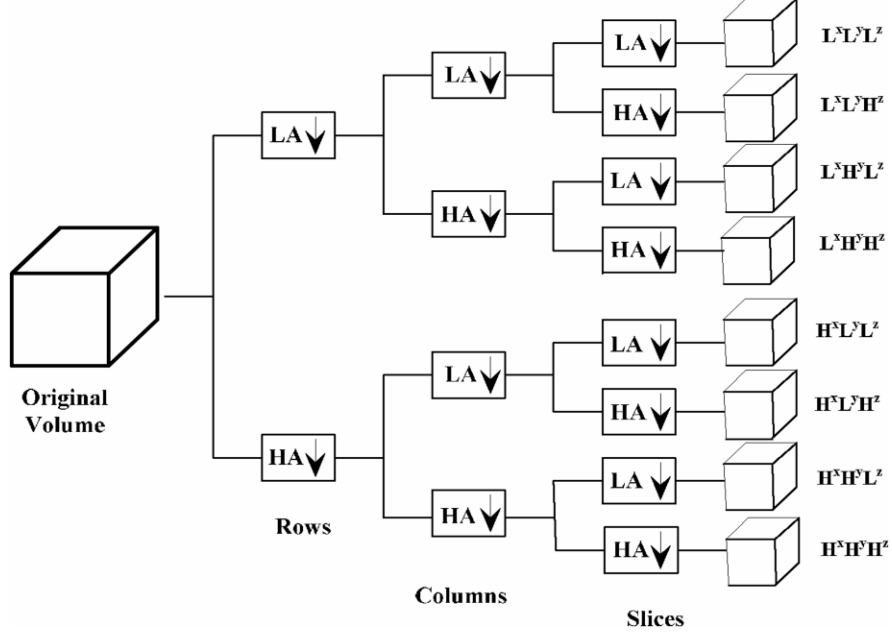


Figure 1. The structure of applying 3D DWT to a volume.

C. K-means Clustering

K-means clustering is a method of cluster analysis which aims to partition n observations into k clusters in which each observation belongs to the cluster with the nearest mean. Given a set of observations (x_1, x_2, \dots, x_n) , where each observation is a d -dimensional real vector, k -means clustering aims to partition the n observations into k ($k \leq n$) sets $\{s_1, s_2, \dots, s_k\}$ so as to minimize the within-cluster sum of squares

$$\arg \min \sum_{i=1}^k \sum_{x_j \in s_i} \|x_j - \mu_i\|^2, \quad (6)$$

where μ_i is the mean of points in s_i .

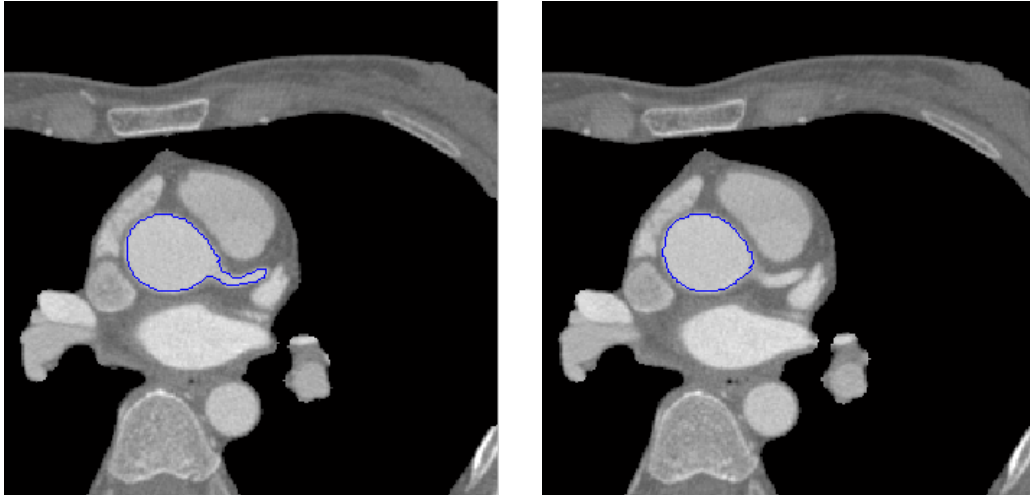
III. THE PROPOSED SEGMENTATION METHOD

In order to segment coronary arteries accurately from CTA data sets, 3D region growing was initially applied to search for the probable location of the coronary arteries. Next, we used the 3D DWT and 3D neutrosophic transformation to accurately detect the coronary arteries.

A. Initial Segmentation of Coronary Arteries

This section discusses the initial segmentation of coronary arteries using 3D region growing. In image preprocessing, we found the aorta automatically by using methods proposed in literature [5, 16]. The selection of the seed point of 3D region growing was initially made to check which slice began the information of the coronary arteries. Due to the small changes in aorta area between the two adjacent slices, we automatically obtained the seed points by the difference between the two adjacent slices.

As shown in Figure 2, we use the difference between the two adjacent slices (a) and (b) to automatically obtain the seed points bounded by the blue line in (c) which indicates the boundary of coronary arteries. The boundary of coronary arteries denotes the high-frequency sub-band $d_j(k)$ in equation (3) when comparing vessel lumen and background.



(a)

(b)



(c)

Figure 2. The 3D region growing seed points in (c) were automatically obtained by using the difference between the two areas bounded by the blue lines in adjacent slices (a) and (b).

Since coronary arteries do not exhibit abrupt intensity changes along their centerline [4], a rough tubular mask of coronary arteries can be easily constructed by 3D region growing. We chose a 26-connected neighborhood for our adjacent pixel relationship, and then the 3D region growing method was applied with a set of pre-specified seed voxel(s) and grown from

these seeds by merging neighboring voxels whose properties were most similar to the pre-merged region. The homogeneity criterion was defined as the difference between the intensity of the candidate voxel and the average intensity of the pre-merged region. The selection of the seed point was initially intended to check which slice began the information of the coronary arteries. Next, the homogeneity criterion was applied to group voxels with the same or similar intensities into one region. If the homogeneity criterion was satisfied, the candidate voxel was merged with the pre-merged region. The process was repeated until no more voxels were assigned to the region, and then the number of all merged voxels was calculated. In order to avoid leakage, the total number of merged voxels was limited to 12000 otherwise, 3D region growing was restarted by automatically using an improved homogeneity criterion. Finally, the initial segmentation of the coronary arteries in a volume was completed.

B. Vessel-Texture Discrimination

According to Parseval's theorem, the energy in a signal $S(t)$ is given as follows [16, 17]:

$$\int |S(t)|^2 dt = \sum_{l=-\infty}^{\infty} |c(l)|^2 + \sum_{j=0}^{\infty} \sum_{k=-\infty}^{\infty} |d_j(k)|^2 \quad (7)$$

This equation implies that the energy of a signal is the summation of low-frequency and high-frequency coefficients. DWT is a good analytic tool for image texture analysis or line-based patterns [21-24]. Since a vessel is a type of 3D line-based pattern in CT volume,

we used l_2 -norm of these wavelet coefficients to find the energy of line-based patterns.

l_2 -norm was defined as

$$E(C) = \|C\|_2 = \sum_{i=1}^p |c_i|^2 \quad (8)$$

where the vector $C = [c_i]_{1 \times p}$ was the wavelet coefficients of a frequency channel. The

searching algorithm is summarized as follows:

Algorithm 1:

1. Transform a given vessel volume into frequency channels by a specified number of decomposition levels. We usually set the number to one in the first search.
2. Use equation (8) to calculate the averaged l_2 -norm of each channel and maximum of $E(C)$ for the vessel volume.
3. If the maximum of $E(C)$ was significantly greater than another channel's $E(C)$, the search was stopped. Otherwise, the number of decomposition levels was increased followed by a repeat of step1.

By using the above algorithm, we observed that the most significant information of the vessel texture often appeared in the high frequency channels. Thus, we used the sub-band HHH to detect vessels in this study.

C. Accurate Detection of Coronary Arteries

The initial segmentation of coronary arteries in a volume was completed by 3D region growing as described in sub-section A. Since region growing is a simple region-based image segmentation method, it was only used to search for the initial location of the coronary arteries. We then accurately detected the coronary arteries by applying DWT to each slice in the volume, as described in this sub-section.

First, the initial location of the coronary arteries obtained from 3D region growing was dilated by 3 voxels. Next, we used Haar wavelet bases in (1) and (2) to transform the host images into the orthogonal DWT domain by one-level decomposition. Only HHH sub-bands were employed for further processes, because most of the information on the coronary arteries and boundaries were in the HHH sub-bands. We calculated the mean energy using coefficients of HHH sub-bands in a local window w as follows:

$$\overline{HHH}(i, j, k) = \frac{1}{w \times w \times w} \sum_{l=i}^r \sum_{m=j}^s \sum_{n=k}^t HHH(l, m, n), \quad (9)$$

where

$$\begin{aligned} r &= \text{round}(d+i / 2w) \\ s &= \text{round}(d+j / 2w) \\ t &= \text{round}(d+k / 2w) \end{aligned}$$

Next, the sub-bands HHH was characterized by 3 membership sets T , F , and U .

$$T_{HHH}(i, j, k) = \frac{\overline{HHH}(i, j, k) - \overline{HHH}_{\min}}{\overline{HHH}_{\max} - \overline{HHH}_{\min}}, \quad (10)$$

$$F_{HHH}(i, j, k) = 1 - T_{HHH}(i, j, k), \quad (11)$$

$$U_{HHH}(i, j, k) = \frac{\delta(i, j, k) - \delta_{\min}}{\delta_{\max} - \delta_{\min}}, \quad (12)$$

where

$$\overline{HHH}_{\min} = \min\{\overline{HHH}(i, j, k)\},$$

$$\overline{HHH}_{\max} = \max\{\overline{HHH}(i, j, k)\},$$

$$\delta(i, j, k) = |\overline{HHH}(i, j, k) - \overline{HHH}(i, j, k)|,$$

$$\delta_{\min} = \min\{\delta(i, j, k)\},$$

$$\delta_{\max} = \max\{\delta(i, j, k)\}.$$

That is, a pixel could be represented as a neutrosophic domain $P(t, f, u)$ which means the pixel is $t\%$ true, $f\%$ false, and $u\%$ uncertain, where t varies in T , f varies in F , and u varies in U . In order to reduce the uncertainty $u\%$, α -means operation was employed as follows.

$$\bar{T}(\alpha) = \begin{cases} T, & \text{i}U < \alpha \\ \bar{T}_\alpha, & \text{i}U \geq \alpha \end{cases} \quad (13)$$

$$\bar{F}(\alpha) = \begin{cases} F, & \text{i}U < \alpha \\ \bar{F}_\alpha, & \text{i}U \geq \alpha \end{cases} \quad (14)$$

$$\bar{U}_\alpha(i, j, k) = \frac{\bar{\delta}_T(i, j, k) - \bar{\delta}_{T_{\min}}}{\bar{\delta}_{T_{\max}} - \bar{\delta}_{T_{\min}}}, \quad (15)$$

where the parameter α is a positive number and

$$\bar{T}_\alpha(i, j, k) = \frac{1}{w \times w \times w} \sum_{l=i}^r \sum_{m=j}^s \sum_{n=k}^t T(l, m, n),$$

$$\bar{F}_\alpha(i, j, k) = \frac{1}{w \times w \times w} \sum_{l=i}^r \sum_{m=j}^s \sum_{n=k}^t F(l, m, n),$$

$$\bar{\delta}_T(i, j, k) = \left| \bar{T}(i, j, k) - \bar{\bar{T}}(i, j, k) \right|,$$

$$\bar{\bar{T}}(i, j, k) = \frac{1}{w \times w \times w} \sum_{l=i}^r \sum_{m=j}^s \sum_{n=k}^t T(l, m, n)$$

The inverse DWT was then applied to obtain a new volume which possessed the true subset.

Finally, we applied K-means clustering (K=3) in (3) to differentiate vessel lumen, vessel

boundary (true subset) and background. The true subset T was retained respectively.

IV. Experiments and Discussion

To test the proposed method, CTA volumes obtained from a CT system were segmented for coronary arteries. The slice thickness was 0.625 mm and the volume was 512*512*(\cdot) in different data sets. The window size w was set to 3 which was enough to capture the local texture characteristics. The parameter α was set to 0.2. We tested 20 data sets, most of which were segmented successfully except that for a few small branches that were lost in 2 of

the data sets due to the local failure in region growing. To evaluate the performance of our segmented coronary arteries, we compared our results with that obtained from the ground truth values obtained from the commercial software from GE Healthcare and the level-set method. We used the overlapping metric (OM) and Hausdorff distance (d_H) to analyze the efficiency of each method.

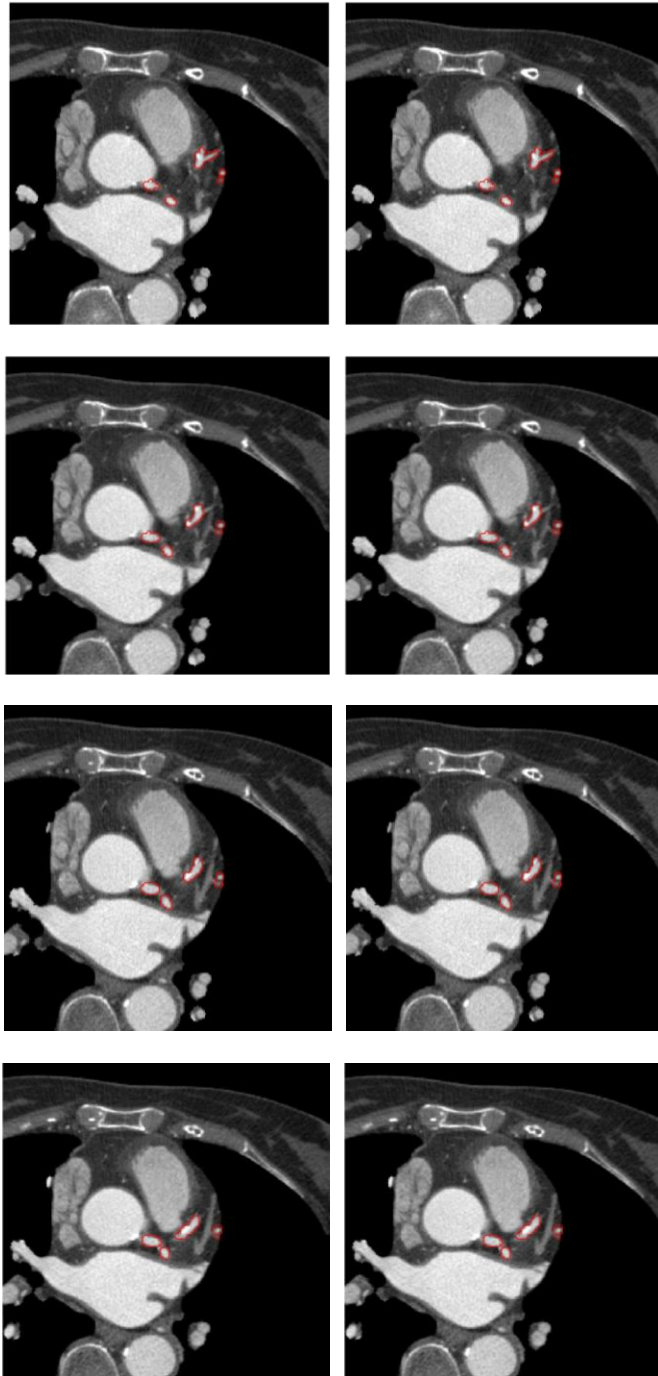
A. The Segmenting Efficiency of 2D Imaging

Figure 3(b) shows the results of 6 slices in 1 CTA volume obtained using the proposed method. The areas bounded by the red line are coronary arteries. The segmenting efficiency was compared with the manually delineated ground truth data N_R in Figure 3 (a) by using OM which was defined as

$$OM = 2 \left(\frac{N_T \cap N_R}{N_T + N_R} \right)$$

where N_T indicates the pixels/voxels of the segmented coronary arteries. The OM was close to 1 when the segmentation was well matched to the reference ground truth, and approached zero when the results had no similarity to the reference.

In the 6 slices in Figure 3(b), the segmentation results showed that the proposed method detected coronary arteries accurately. As shown in Table I, the average OM of the proposed method was 0.96.



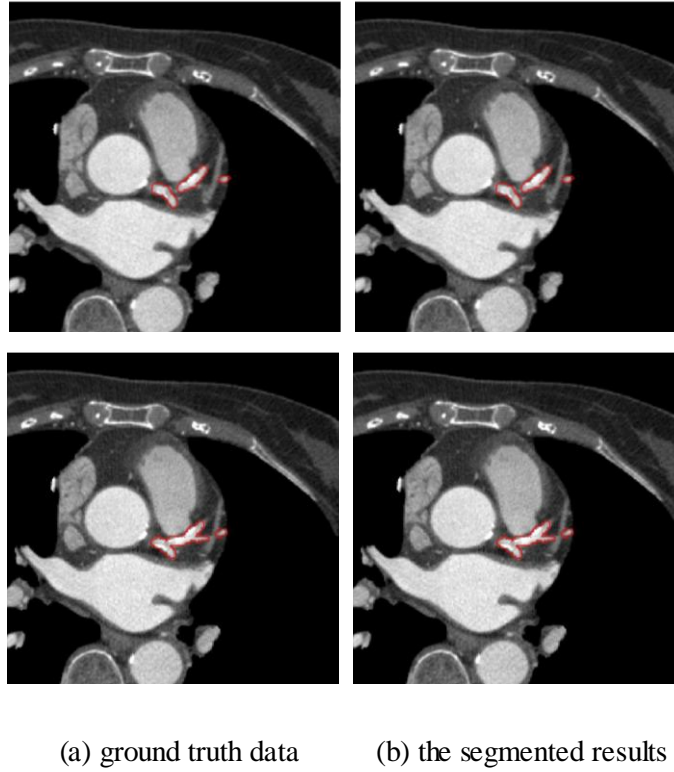


Figure 3. Comparison of the 2D segmentation (b) with respect to the ground truth data (a).

TABLE I
COMPARISON OF THE 2D IMAGE SEGMENTATION RESULTS.

	Yang <i>et al.</i> [11] Method	Proposed Method
Mean OM	0.68	0.96

B. The Segmenting Efficiency on a 3D Volume

The first focus of the comparison was the correctness of the 4 main branches: the right coronary artery (RCA), the left anterior descending artery (LAD), the circumflex (CRX), and the first diagonal artery (DA). Figures 4 and 5 show the detected coronary arteries in the CTA

volume obtained from the GE Healthcare and the proposed method, and the proposed method segmented these 4 main branches correctly compared to the 4 main branches in Figure 5.

Another test of performance is the correctness of the remaining branches. Due to the multi-resolution of the DWT, each sub-branch in Figures 3 and 5 was correctly segmented. Furthermore, the coronary arteries obtained from the proposed method were much better than those obtained from the level-set method, which had several leakages as seen in Figure 6.

In addition to the OM, the difference between the segmented vessel surface and the manually delineated ground truth data was measured by the Hausdorff distance [25] which was defined as follows:

$$d_H(X, Y) = \max \left\{ \sup_{x \in X} \inf_{y \in Y} d(x, y), \sup_{y \in Y} \inf_{x \in X} d(x, y) \right\}$$

where X and Y are the vertices of the mesh surfaces of the arteries corresponding to the segmentation results and the ground truth and $d(x, y)$ measure the Euclidean distance between points x and y belonging to vertices X and Y . Table II lists the mean OM and mean Hausdorff distance for the proposed method and the method of Yang *et al.* [11]. The results show that the proposed method was much better than that of Yang *et al.* [11] in terms of both OM and Hausdorff distance.

C. Diameter Measurement

In this sub-section, we computed the diameters of segmented coronary arteries using the proposed method and the method of Yang *et al.* Many efficient algorithms have been proposed to extract of the tube centerline. We applied the algorithm proposed in by Lee *et al.* [26] to extract the centerline of the segmented coronary arteries. Using these extracted centerlines, we obtained the cross sections of the segmented coronary arteries, as shown in Figure 7. By computing the area A of each cross section, the diameter r was estimated as follows:

$$r \approx \sqrt{\frac{A}{\pi}}$$

Table III shows the estimated diameter of the same cross section for the proposed method and the method of Yang *et al.* [11]. The diameter of the proposed method was closer to the diameter in ground truth data at the same cross section than that obtained from the method Yang *et al.*

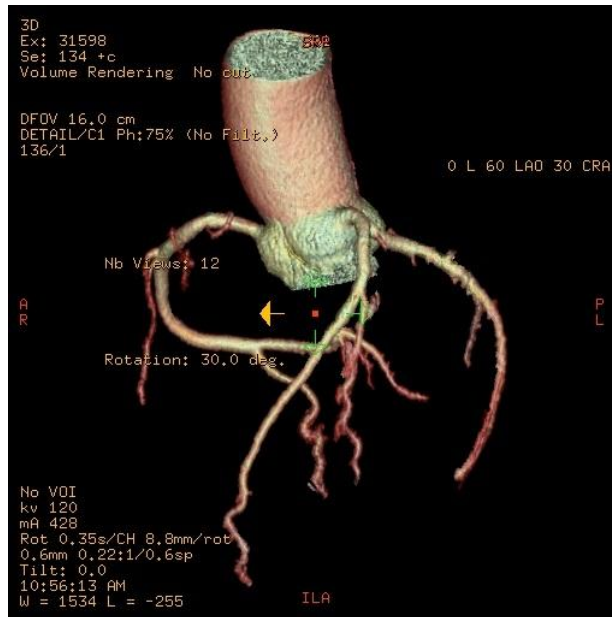


Figure 4. The 3D coronary arteries manually edited by a radiologist using an AW workstation (GE Healthcare, Wisconsin, USA).

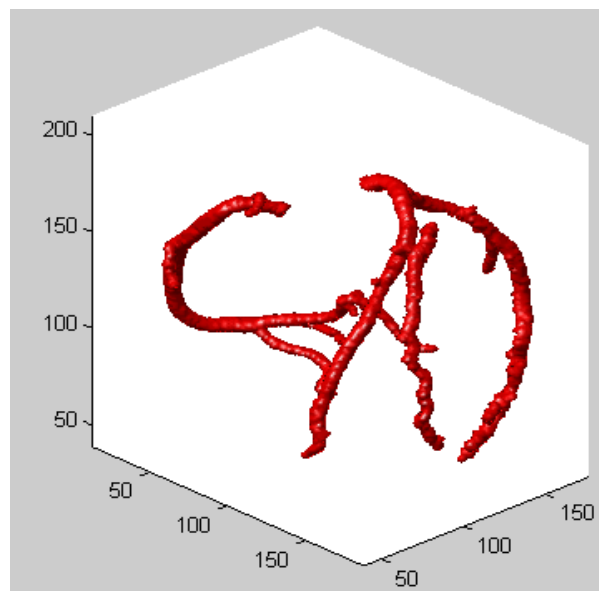


Figure 5. The 3D coronary arteries in the CTA volume obtained from the proposed method.

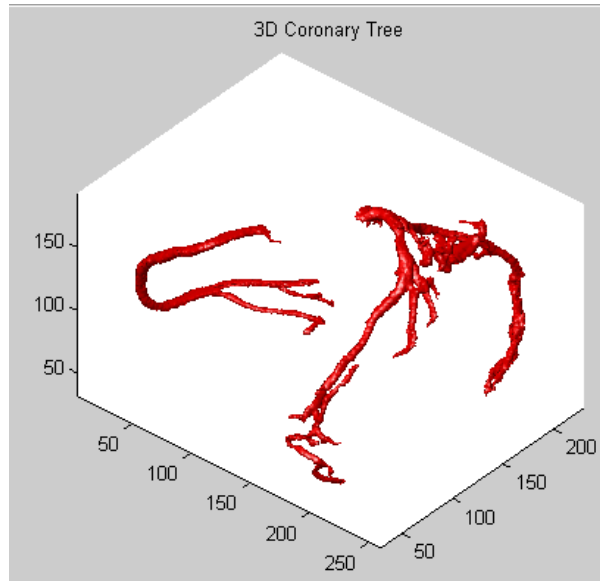
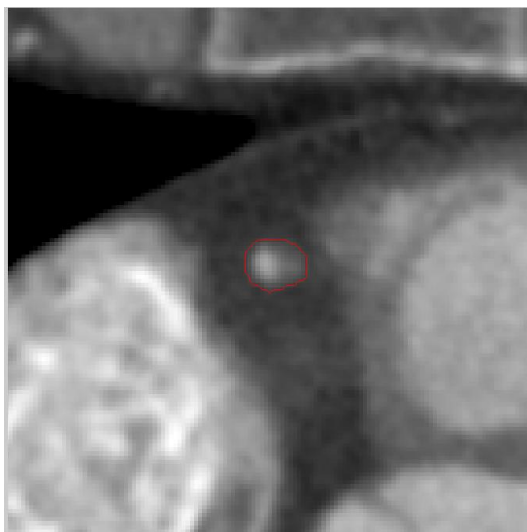
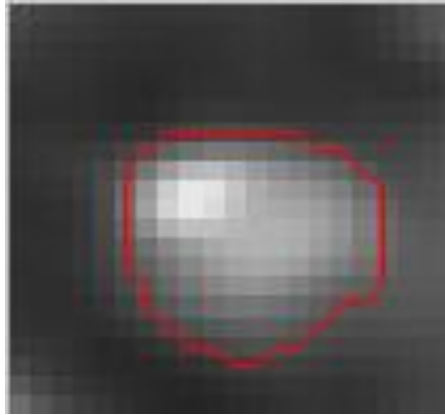


Figure 6. The 3D coronary arteries in the CTA volume obtained from the level set approach.



(a)



(b)

Figure 7. (a) The cross section of the segmented coronary arteries. (b) Magnified view of

(a).

TABLE II
COMPARISON OF THE 3D SEGMENTATION RESULTS.

	Yang <i>et al.</i> [11] Method	Proposed Method
Mean OM	0.60	0.92
Mean $d_H(X,Y)$	1.08	0.68

TABLE III
COMPARISON OF THE CROSS-SECTIONAL DIAMETER.

Ground Truth	Yang <i>et al.</i> [11] Method	Proposed Method
4.7	4.4	4.8

D. Experimental Environment and Execution Time

The proposed method was implemented in MATLAB (R2011a) on a standard specification PC with a 3.2 GHz CPU and 12 GB RAM. The average execution time was 58 seconds to extract the entire coronary tree, compared to approximately 47 seconds for the method by Yang *et al.* for the same process.

V. CONCLUSIONS

Accurate extraction of coronary arteries is important to assess artery lesions in clinical practice. In this study, we propose a novel method to segment coronary arteries automatically. Based on the initial segmentation obtained from 3D region growing, one-level 3D DWT and 3D neutrosophic transformation were applied to detect coronary arteries accurately. The location of vessel information, in HHH sub-band coefficients of DWT, was successfully detected by the proposed vessel-texture discrimination algorithm. Accordingly, the HHH sub-band coefficients were used and characterized and classified by 3D neutrosophic transformation and K-means clustering. The experimental results verify the efficiency of the proposed method.

ACKNOWLEDGEMENTS

This study was supported by the National Taiwan University Hospital and the National

Science Council, Taiwan (ROC), under the NSC grant: NSC 98-2221-E-002-098-MY3.

REFERENCES

- [1] A. F. Frangi, W. J. Niessen, K. L. Vincken, and M. A. Viergever, "Multiscale Vessel Enhancement Filtering," *Proc. Int. Conf. Medical Image Computing Computer-Assisted Intervention, LNCS*, vol. 1496, pp. 130–137, 1998.
- [2] P. J. Yim, J. J. Cebra, R. M. Mullick, H. B. Marcos, and P. L. Choyke, "Vessel Surface Reconstruction With a Tubular Deformable Model," *IEEE Transactions on Medical Image Processing*, vol. 20, pp. 1411-1421, 2001.
- [3] D. Nain, A. Yezzi, and G. Turk, "Vessel Segmentation Using a Driven Flow Shape," *MICCAI 2004, LNCS 3216*, pp. 51-59, 2004.
- [4] H. Tek, Y. Zheng, M. A. Gulsun, and G. Funka-Lea, "An Automatic System For Segmenting Coronary Arteries from CTA," *MICCAI-CVII 2011*, pp. 47-54, 2011.
- [5] A Hennemuth, T. Boskamp, D. Fritz, C. Kühnel, S. Bocj, D. Rinck, M. Scheuring, and H.-O. Peitgen, "One-click coronary tree segmentation in CT angiographic images," *Elsevier: International Congress Series*, vol. 1281, pp. 317-321, May 2005.
- [6] Y. Yang, A. Tannenbaum, and D. Giddens, "Knowledge-Based 3D Segmentation and Reconstruction of Coronary Arteries Using CT Images," in *Proc. 26th Annu. IEEE Conf. Engineering in Medicine and Biology Society*, Atlanta, GA, USA, 2004.

- [7] H. Shikata, G. McLennan, E. A. Hoffman, and M. Sonka, "Segmentation of pulmonary vascular tree from thoracic 3D CT Images," *International Journal of Biomedical Imaging*, vol. 2009.
- [8] T. Brox and J. Weickert, "Level set segmentation with multiple regions," *IEEE Transactions on Image Processing*, vol. 15, no. 10, pp.3213-3218, 2006.
- [9] W. K. Pratt, *Digital Image Processing 4th Edition*, John Wiley & Sons, Inc., Los Altos, California, 2007.
- [10] L. Wang, L. He, A. Mishra and C. Li, "Active Contours Driven by Local Gaussian Distribution Fitting Energy," *Journal of Signal Processing*, vol. 89, no. 12, pp. 2435-2447, 2009.
- [11] Y. Yang, A. Tannenbaum, D. Giddens, and A. Stillman, "Automatic Segmentation of Coronary Arteries using Bayesian Driven Implicit Surfaces," 4th *IEEE International Symposium on Biomedical Imaging (ISBI)*, pp.189-192, 2007.
- [12] Y. Wang, and P. Liatsis, "An Automatic Method for Segmentation of Coronary Arteries X-ray in Coronary CT Imaging," *IEEE Computer Society Developments in E-systems Engineering 2010*.
- [13] Y. Wang and P. Liatsis, "Automatic Segmentation of Coronary Arteries in CT Imaging in the Presence of Kissing Vessel Artifacts," *IEEE Transactions on Information Technology in Biomedicine*, vol. 16, no. 4, pp. 782-788, July 2012.

- [14] C. T. Metz and M. Schaap, "Coronary centerline extraction from CT coronary angiography images using a minimum cost path approach (MCP)," *Medical Physics*, vol.36, no.12, December 2009.
- [15] O. Friman, "Multiple hypothesis template tracking (MHT)," *Medical Image Analysis*, 2010.
- [16] S. C. Saur, C. Kühnel, T. Boskamp, G. Szekely, and P. C. Cattin, "Automatic Ascending Aorta Detection in CTA Datasets," *Springer*, pp. 323-327, 2008.
- [17] T. Pavlidis and Y.-T Liow, "Integrating Region Growing and Edge Detection," *IEEE Transactions on Pattern Analysis and Machine Intelligence*, vol.12, pp. 225-233, 1989.
- [18] S. Mallat, "A Theory for Multiresolution Signal Decomposition: the Wavelet Representation," *IEEE Transactions on Pattern Analysis and Machine Intelligence*, vol.11, pp. 674-693, 1989.
- [19] C. S. Burrus, R. A. Gopinath, and H. Gao, *Introduction to Wavelet Theory and Its Application*. New Jersey: Prentice-Hall 1998.
- [20] G. Bernabe, R. Fernandez, J. M. Garcia, M. E. Acacio, and J. Gonzalez, "An Efficient Implementation of A 3D Wavelet Transform Based Encoder on Hyper-Threading Technology," *Parallel Computing*, vol. 33, pp. 54-72, 2007.
- [21] M. User, "Local linear transforms for texture measurements," *Signal Processing*, vol. 11, no. 1, pp.61-79, July, 1986.

- [22] T. Chang and C.-C. Jay Kuo, "Texture Analysis and Classification with Tree-Structured Wavelet Transform," *IEEE Transactions on Image Processing*, vol. 2, no. 4, pp.429-441, 1993.
- [23] M. Unser, "Texture Classification and Segmentation Using Wavelet Frames," *IEEE Transactions on Image Processing*, vol. 4, no. 11, pp.1549-1560, 1995.
- [24] Z.-Z. Wang and J.-H. Yong, "Texture Analysis Classification and Segmentation with Linear Regression Model Based on Wavelet Transform," *IEEE Transactions on Image Processing*, vol. 17, no. 8, pp.1421-1430, 2008.
- [25] R. T. Rockefellar and R. J.-B. Wets, *Variational Analysis*. vol. 317, New York, NY: Springer Press, 1988.
- [26] T.-C. Lee and R. L. Kashyap, "Building Skeleton Model Via 3-D Medial Surface/Axis Thinning Algorithms," *IEEE Transactions on Graphical Models and Image Processing*, vol. 56, no. 6, pp. 462-478, 1994.